

03	21/10/21	DA	IS	NM
2	7/9/21	DA	MZ	NM
1	10/12/20	DA	MMG	NM
02	27/11/20	Draft	MMG	NM
01	20/11/20	Preliminary	MMG	NM
rev	date	name	by	chk

fjmt studio architecture interiors landscape urban community
sydney melbourne uk
Level 5, 70 King Street t +61 2 9251 7077 w fjmtstudio.com

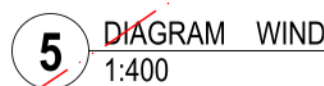
project

LIVERPOOL CIVIC PLACE PROJECT
52 SCOTT ST, LIVERPOOL
SYDNEY NSW <SITE POSTCODE>

title
DEVELOPMENT APPLICATION
Site Plan

scale	1:500 @ A1	first issued	20/11/20
-------	------------	--------------	----------

project code	sheet no.	revision
BLCP	DA-LA-8001	03



scale	1:400 @ A1	first issued	20/11/20
project code	sheet no.	revision	
BLCP	DA-LA-8002	03	

Issued for Approval



LANDSCAPE CHARACTER ZONES

1. Scott Street Arrival Plaza
2. George Lane Interface
3. Central Laneway
4. Pocket Park
5. Terminus Street Frontage

GENERAL NOTES

- ALL DIMENSIONS AND EXISTING CONDITIONS SHALL BE CHECKED AND VERIFIED BY THE CONTRACTOR BEFORE PROCEEDING WITH THE WORK.
- ALL LEVELS RELATIVE TO AUSTRALIAN HEIGHT DATUM.
- DO NOT SCALE DRAWINGS.
- USE FIGURED DIMENSIONS ONLY.

Legend

- SITE BOUNDARY
- - - EOW - Extent of Works
- EX RL Existing Relative Level
- FFL Finished Floor Level (Internal)
- RL Relative Level
- SSL Structural Slab Level
- TK Top of kerb Level (Survey)
- - - Extent of Soil
- - - Structural Soil
- - - Low point and passive irrigation to trees
- Existing tree to be removed
- New Trees
- Mass Planting
- Turf

GROUND FLOOR

- Granite
- Brick paving bands
- Herringbone
- Feature Paving
- Custom Bench + Seats
- Existing Clay Brick pathway

TERRACES

- Paving on Pedestal
- Feature Paving
- Raised planter with Privacy Screen
- Raised planter with Integrated Bench

— Grated Drain
□ Pit

NOTE:
PUBLIC DOMAIN WORKS SUBJECT TO FUTURE ENDORSMENT BY COUNCIL AS PER CONDITIONS 4,5,6 + 13 OF DA-565/2019.

03	21/10/21	DA	IS	NM
2	7/9/21	DA	MZ	NM
1	10/12/20	DA	MMG	NM
02	27/11/20	DA	MMG	NM
01	20/11/20	Preliminary	MMG	NM
rev	date	name	by	chk

first studio architecture interiors landscape urban community
sydney melbourne uk
Level 5, 70 King Street • +61 2 9291 7077 • firststudio.com

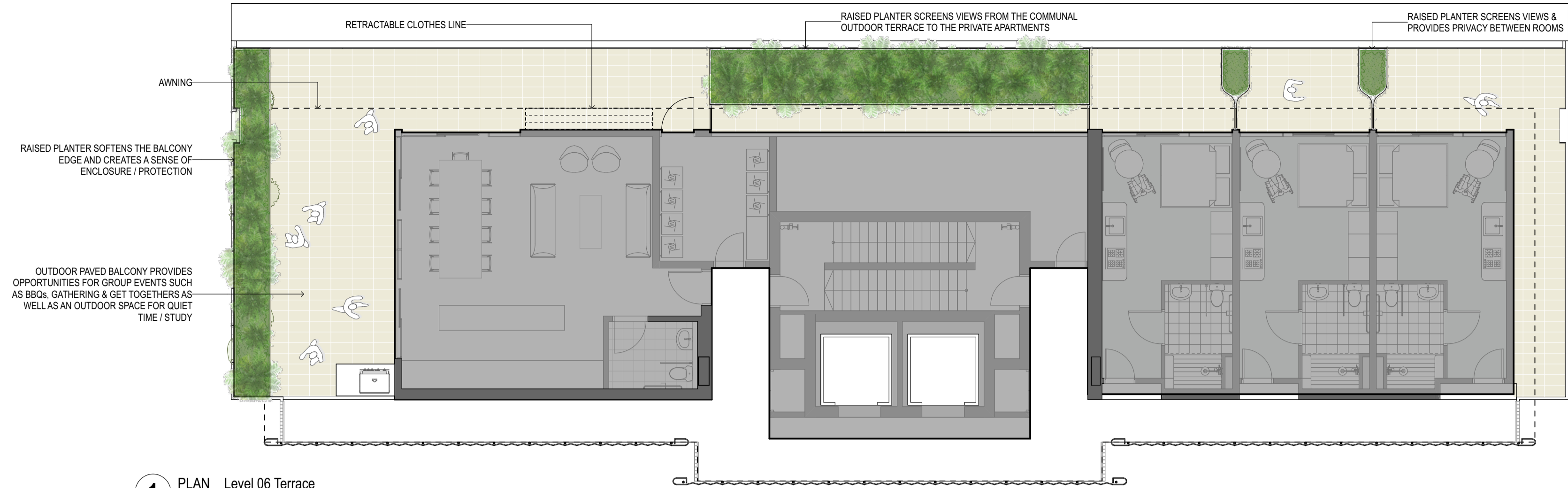


project
LIVERPOOL CIVIC PLACE PROJECT
52 SCOTT ST, LIVERPOOL
SYDNEY NSW <SITE POSTCODE>

title
DEVELOPMENT APPLICATION
General Ground Plan

scale	1:200 @ A1	first issued	20/11/20
project code	sheet no.	revision	
BLCP	DA-LA-8010	03	

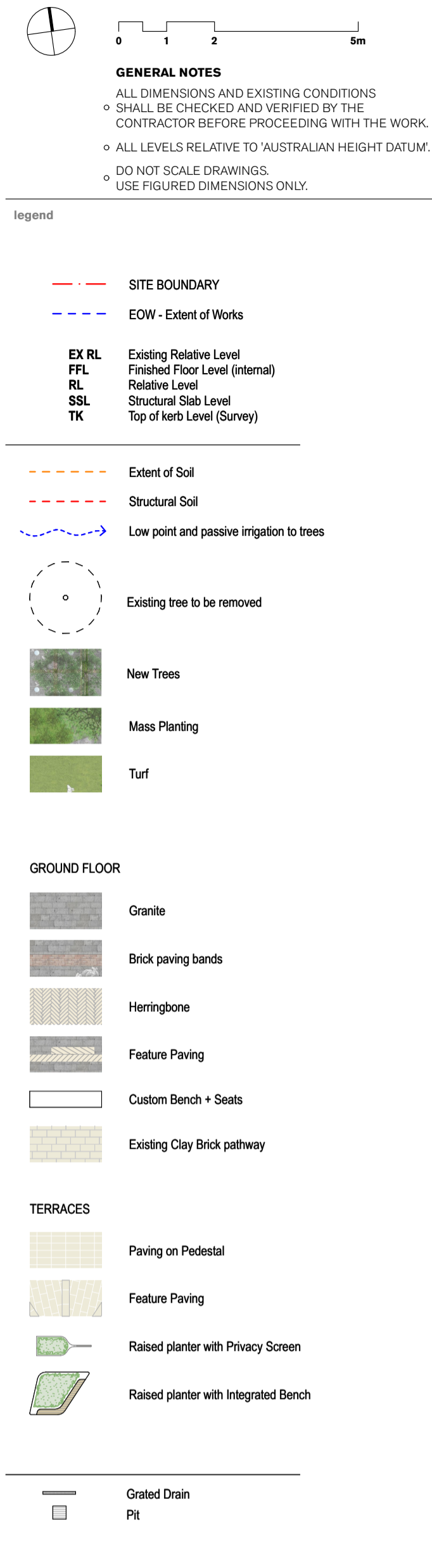
Issued for Approval



1 PLAN Level 06 Terrace
1:100



2 PLAN Level 07 Terrace
1:100



03	21/10/21	DA	IS	NM
1	10/12/20	DA	MMG	NM
02	27/11/20	Draft	MMG	NM
01	20/11/20	Preliminary	MMG	NM
rev	date	name	by	chk

fjmt studio architecture interiors landscape urban community
sydney melbourne uk
Level 5, 70 King Street t +61 2 9251 7077 w fjmtstudio.com

project
LIVERPOOL CIVIC PLACE PROJECT
52 SCOTT ST, LIVERPOOL
SYDNEY NSW <SITE POSTCODE>

title
DEVELOPMENT APPLICATION
Level 06 & 07 Roof Terraces

scale	1:100 @ A1	first issued	20/11/20
project code	sheet no.	revision	
BLCP	DA-LA-8011	03	

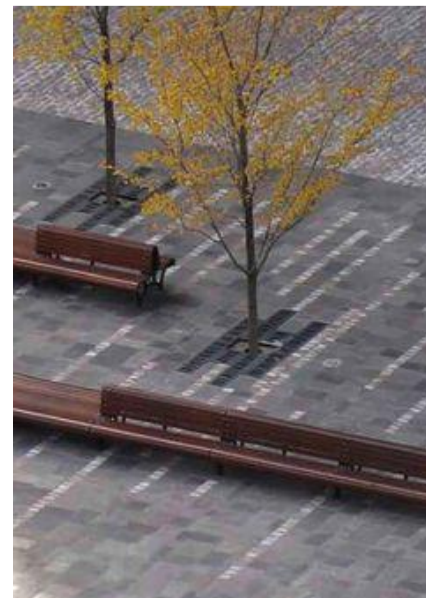
Issued for Approval



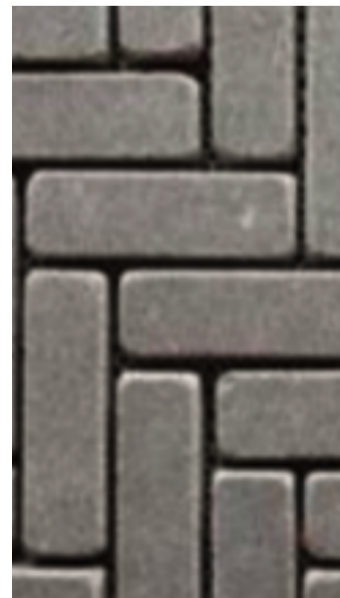
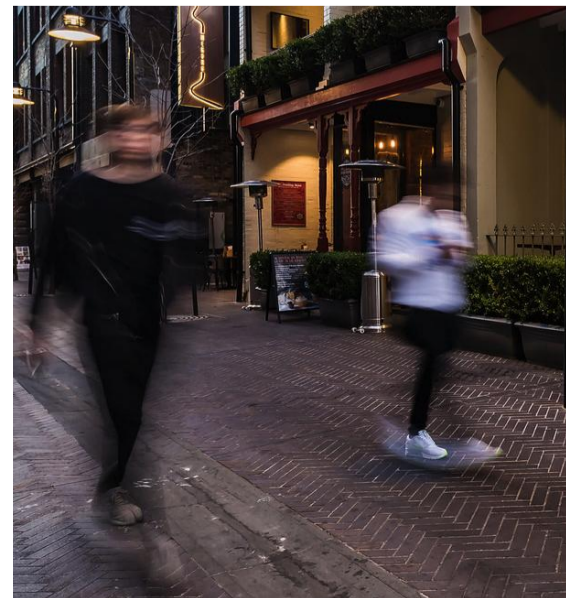
GRANITE



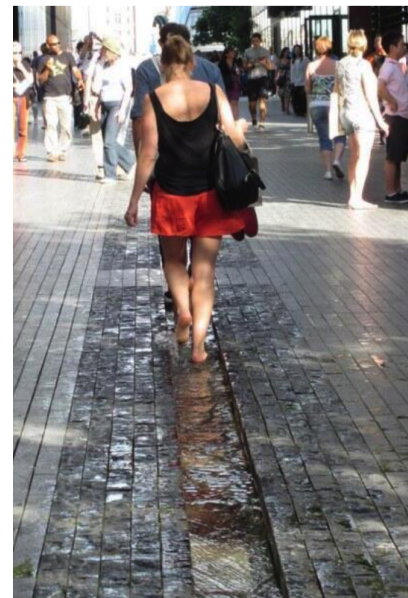
LANEWAY CHARACTER



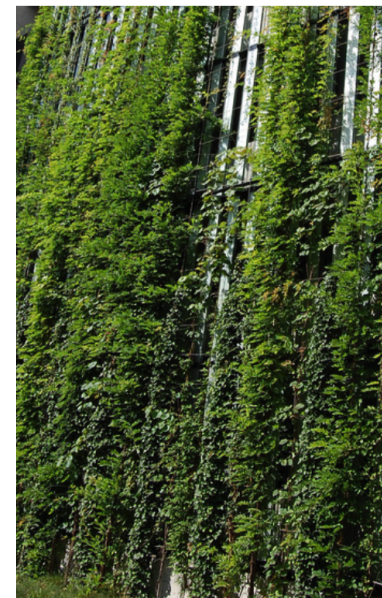
GEORGE LANE CHARACTER



PAVING FEATURE / SPOON DRAIN



TRELLIS TO CO-LIVING COLUMNS



CUSTOM SEATING



03	21/10/21	DA		IS	NM
2	22/02/21	DA		MZ	NM
1	10/12/20	DA		MMG	NM
02	27/11/20	Draft		MMG	NM
01	20/11/20	Preliminary		MMG	NM
rev	date	name		by	chk

fjmt studio architecture interiors landscape urban community
sydney melbourne uk
Level 5, 70 King Street t +61 2 9251 7077 w fjmtstudio.com

project
LIVERPOOL CIVIC PLACE PROJECT
52 SCOTT ST, LIVERPOOL
SYDNEY NSW <SITE POSTCODE>

title
DEVELOPMENT APPLICATION
Arrival Plaza and Central Lane

scale 1:100 @ A1 first issued 20/11/20

project code BLCP sheet no. DA-LA-8012 revision 03

Issued for Approval



0125m

GENERAL NOTES

ALL DIMENSIONS AND EXISTING CONDITIONS SHALL BE CHECKED AND VERIFIED BY THE CONTRACTOR BEFORE PROCEEDING WITH THE WORK.

ALL LEVELS RELATIVE TO 'AUSTRALIAN HEIGHT DATUM'.

DO NOT SCALE DRAWINGS.

USE FIGURED DIMENSIONS ONLY.

legend

THE TERMINUS STREET FRONTAGE IS CHARACTERISED BY A WIDE PAVED THRESHOLD TO CREATE A SENSE OF ARRIVAL TO THE RETAIL AND CIVIC PRECINCT.

THE TERMINUS POCKET PLAZA SPACE HAS BEEN EXTENDED TO PROVIDE ADDITIONAL SEATING OPPORTUNITIES FOR WORKERS, TENANTS AND VISITORS. IT ALSO FACILITATES THE LOCATION OF BIKE PARKING HOOPS.

GARDEN FORMS A LAYERED LANDSCAPE AND REDUCE THE SENSE SCALE OF THE UPPER TERRACE.

THE GARDEN AREA AND TERRACING PROVIDE GOOD SOIL VOLUMES AND ALLOW FOR LARGER TREE PLANTINGS WHICH WILL ASSIST IN MITIGATING WIND EFFECTS. THE TERRACE CREATES A SENSE OF ENCLOSE AND PROTECTION. THE PLANTING WILL ALSO SCREEN VIEWS TO THE BUSY TERMINUS STREET.

NEW FOOTPATH SET BACK FROM THE ROADWAY TO PROVIDE A BUFFER FROM THE BUSY STATE ROAD. NEW AMENITY PLANTING BETWEEN THE FOOTPATH & THE COMMERCIAL BUILDING PROVIDES LOW SCREEN PLANTING & A SENSE OF SEPARATION BETWEEN THE PATH & THE PODIUM.

SCREEN PLANTING REDUCE SENSE OF SCALE OF THE PODIUM AND CREATE LAYERED GREEN ADDRESS.

FUTURE REALIGNMENT WORKS - THE TIMEFRAME FOR THESE WORKS HAS NOT BEEN DETERMINED.

GRANITE



POCKET PARK CHARACTER IMAGE



DINING / CAF  OPPORTUNITIES



SCREENING VEGETATION



03	21/10/21	DA		IS	NM
2	22/02/21	DA		MZ	NM
1	10/12/20	DA		MMG	NM
02	27/11/20	Draft		MMG	NM
01	20/11/20	Preliminary		MMG	NM
rev	date	name		by	chk

fjmt studio architecture interiors landscape urban community
sydney melbourne uk
Level 5, 70 King Street t +61 2 9251 7077 w fjmtstudio.com



project
LIVERPOOL CIVIC PLACE PROJECT
52 SCOTT ST, LIVERPOOL
SYDNEY NSW <SITE POSTCODE>

title
DEVELOPMENT APPLICATION
Terminus Pocket Park

scale 1:100 @ A1 first issued 20/11/20

project code BLCP sheet no. DA-LA-8013 revision 03

Issued for Approval

0125m

GENERAL NOTES

ALL DIMENSIONS AND EXISTING CONDITIONS SHALL BE CHECKED AND VERIFIED BY THE CONTRACTOR BEFORE PROCEEDING WITH THE WORK.
ALL LEVELS RELATIVE TO 'AUSTRALIAN HEIGHT DATUM'.
DO NOT SCALE DRAWINGS.
USE FIGURED DIMENSIONS ONLY.

legend



03	21/10/21	DA		IS	NM
2	7/9/21	DA		MZ	NM
1	10/12/20	DA		MMG	NM
02	27/11/20	Draft		MMG	NM
01	20/11/20	Preliminary		MMG	NM
rev	date	name		by	chk

fjmt studio architecture interiors landscape urban community
sydney melbourne uk
Level 5, 70 King Street t +61 2 9251 7077 w fjmtstudio.com



project
LIVERPOOL CIVIC PLACE PROJECT
52 SCOTT ST, LIVERPOOL
SYDNEY NSW <SITE POSTCODE>

title
DEVELOPMENT APPLICATION
Sections

scale 1:100 @ A1 first issued 20/11/20

project code	sheet no.	revision
BLCP	DA-LA-8020	03

Issued for Approval



1 SECTION
1:100



2 SECTION
1:100



3 SECTION
1:100

GENERAL NOTES

- ALL DIMENSIONS AND EXISTING CONDITIONS SHALL BE CHECKED AND VERIFIED BY THE CONTRACTOR BEFORE PROCEEDING WITH THE WORK.
- ALL LEVELS RELATIVE TO 'AUSTRALIAN HEIGHT DATUM'.
- DO NOT SCALE DRAWINGS.
- USE FIGURED DIMENSIONS ONLY.

legend

03	21/10/21	DA		IS	NM
2	7/9/21	DA		MZ	NM
1	10/12/20	DA		MMG	NM
02	27/11/20	Draft		MMG	NM
01	20/11/20	Preliminary		MMG	NM
rev	date	name		by	chk

fjmt studio architecture interiors landscape urban community
sydney melbourne uk
Level 5, 70 King Street t +61 2 9251 7077 w fjmtstudio.com

fjmt

project
LIVERPOOL CIVIC PLACE PROJECT
52 SCOTT ST, LIVERPOOL
SYDNEY NSW <SITE POSTCODE>

title
**DEVELOPMENT APPLICATION
Sections**

scale	1:100 @ A1	first issued	20/11/20
project code	sheet no.	revision	
BLCP	DA-LA-8021	03	

Issued for Approval

- ALL DIMENSIONS AND EXISTING CONDITIONS SHALL BE CHECKED AND VERIFIED BY THE CONTRACTOR BEFORE PROCEEDING WITH THE WORK.
- ALL LEVELS RELATIVE TO 'AUSTRALIAN HEIGHT DATUM'.
- DO NOT SCALE DRAWINGS.
- USE FIGURED DIMENSIONS ONLY.

Technical cross-section diagram of a tree planter detail. The diagram shows a tree trunk and canopy above a planter box. The planter box is filled with soil and contains a tree anchor system. The planter box is surrounded by a drainage layer and a root control barrier. The planter box is filled with soil and contains a tree anchor system. The planter box is surrounded by a drainage layer and a root control barrier. The planter box is filled with soil and contains a tree anchor system. The planter box is surrounded by a drainage layer and a root control barrier.

Labels and dimensions:

- 12.25m² 800MM DEEP MIN.
- REFER PLANT SCHEDULE FOR SMALL TREE SPECIES
- 1:4 MAX. SLOPE
- 1:4 MAX.
- MULCH
- INSPECTION CAP
- NOM. 50mm BELOW TOP LEVEL OF MULCH OR TURF
- IMPORTED SOIL MIX TYPE A
- IRRIGATION
- TREE ANCHOR SYSTEM
- IMPORTED SOIL MIX TYPE B
- ATTACH AND LOOP TIE DOWN CHAIN TO THREE POINTS ON THE MESH AND RUN OVER THE ROOT BALL OF THE TREE
- GEOTEXTILE BONDED TO DRAINAGE LAYER TO SIDES AND BASE
- DRAINAGE CELL TILES
- ROOT CONTROL BARRIER TO BASE OF PLANTER
- SS MESH FOR ANCHOR
- PROTECTION BOARD
- WATERPROOF MEMBRANE
- REFER ARCHITECTS SPECIFICATION
- 800mm to 1200mm
- 400
- 1000MM
- A
- B

A cross-sectional diagram of a green roof assembly. The layers, from top to bottom, are:

- PLANTING:** Represented by green foliage growing in white pots.
- SOIL TYPE A:** A layer with a cross-hatch pattern, labeled with a large 'A'.
- FILTER LAYER:** A thin layer with a dotted pattern.
- GEOTEXTILE:** A thin layer with a dashed pattern.
- DRAINAGE CELL TILES:** A layer with a grid pattern.
- PROTECTION BOARD:** A thin solid black layer.
- WATERPROOF SYSTEM:** A layer with a wavy, irregular pattern.
- CONCRETE SLAB TO ENGINEER'S DETAIL:** The base layer with a dense stippled pattern.

On the left side, a vertical dimension line indicates the height of the planting layer, labeled "VARIES 250-300".

3 X SIZE OF ROOTBALL

TREE REFER SCHEDULE

50mm HESSIAN TIES LOOPED INTO FIGURE 8 AND STAPLED TO STAKES

STAKES AS SPECIFIED
STAKES IN TRIANGULAR FORMATION DRIVEN SECURELY INTO SUBGRADE

75mm MULCH AS SPECIFIED AS SPECIFIED

INSPECTION CAP
NOM. 50mm BELOW TOP LEVEL OF MULCH OR TURF

BL (REFER TO PLANS)

IRRIGATION AS SPECIFIED

IMPORTED SOIL TYPE A AS SPECIFIED

SOIL TYPE B AS SPECIFIED

LDO

BREAK UP SIDES & BASE 100mm DEPTH

A cross-sectional diagram of a landscape installation. The diagram shows a series of plants in a row. Below the plants, there is a layer of mulch with a 'FORM DISH IN MULCH AROUND TRUNK (TYPICAL)'. Below the mulch is an 'EROSION CONTROL MATTING ON SLOPES GREATER THAN 1:1 TO MANUFACTURERS SPECIFICATION'. Below the matting is a layer of 'MULCH AS SPECIFIED'. Below the mulch is a layer of 'IRRIGATION AS SPECIFIED'. Below the irrigation is a layer of 'SOIL MIX TYPE A. REFER SCHEDULE'. Below the soil mix is a layer of 'CULTIVATED SUBGRADE TO 100mm'. The total height of the mulch, matting, and soil mix layers is indicated as 300. The height of the mulch layer is indicated as 75. The height of the subgrade layer is indicated as 100.

Diagram illustrating a cross-section of a landscape installation showing various layers and components:

- FORM DISH IN MULCH AROUND TRUNK (TYPICAL)
- EROSION CONTROL MATTING ON SLOPES GREATER THAN 1:1 TO MANUFACTURERS SPECIFICATION
- MULCH AS SPECIFIED
- IRRIGATION AS SPECIFIED
- SOIL MIX TYPE A. REFER SCHEDULE
- CULTIVATED SUBGRADE TO 100mm

03	21/10/21	DA	IS	NM
1	10/12/20	DA	MMG	NM
02	27/11/20	Draft	MMG	NM
01	20/11/20	Preliminary	MMG	NM
rev	date	name	by	chk

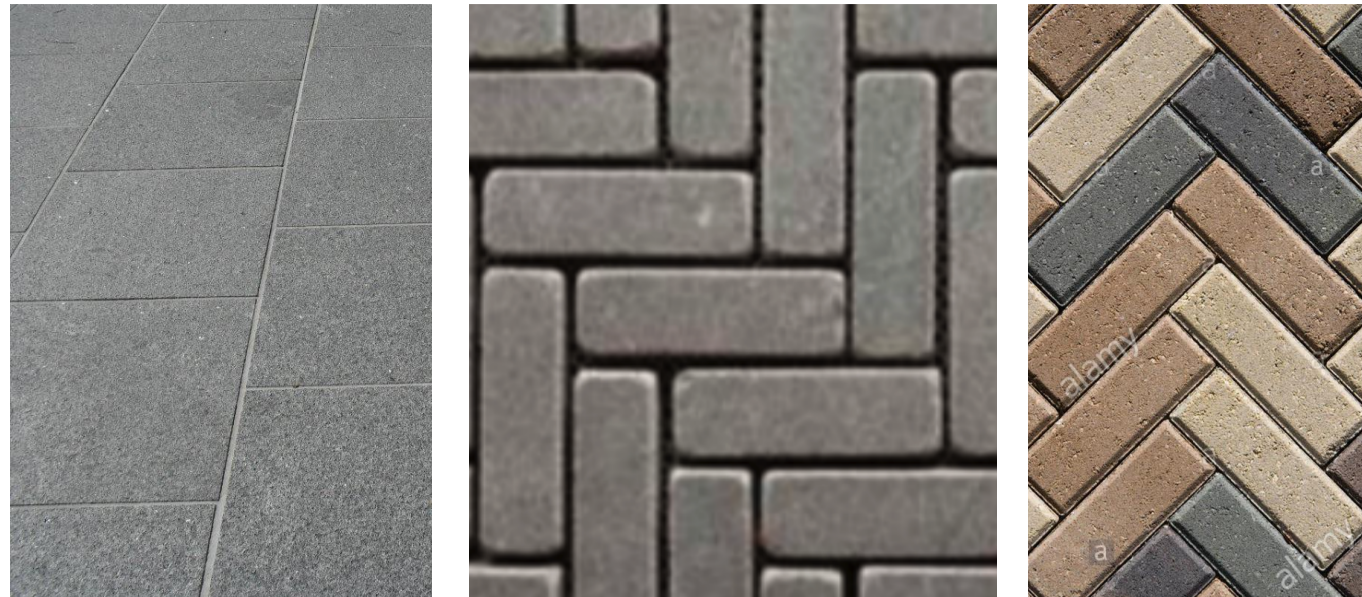
fjmt

BLCP DA-LA-8030 03

Issued for Approval

MATERIAL PALETTE

PAVING



BLACK GRANITE CBD CORE HERRINGBONE PAVING & FEATURE BANDING

FURNITURE



CUSTOM CBD FURNITRE & PUBLIC SEATING

INDICATIVE PLANTING PALETTE

TREES SPECIES



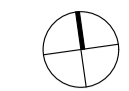
SHHRUBS & GROUNDCOVERS



NATIVE GRASSES



Trellis



GENERAL NOTES

- ALL DIMENSIONS AND EXISTING CONDITIONS SHALL BE CHECKED AND VERIFIED BY THE CONTRACTOR BEFORE PROCEEDING WITH THE WORK.
- ALL LEVELS RELATIVE TO AUSTRALIAN HEIGHT DATUM.
- DO NOT SCALE DRAWINGS.
- USE FIGURED DIMENSIONS ONLY.

legend

INDICATIVE PLANTING SCHEDULE

BOTANICAL NAME	COMMON NAME	INDICATIVE CONTAINER SIZE	HEIGHT & SPREAD AT MATURITY	SPACING m2
TREES				
<i>Banksia integrifolia</i>	Coast banksia	75L	6-8M	AS SHOWN
<i>Backhousia myrtifolia</i>	grey myrtle	800mm	3-4m	AS SHOWN
<i>Corymbia maculata</i>	Spotted Gum	100L	15-6M	AS SHOWN
<i>Cupaniopsis anacardioides</i>	Tuckeroo	100L	8-12M	AS SHOWN
<i>Harpulia pendula</i>	Tulipwood	100L	9-4M	AS SHOWN
<i>Lophostemon confertus</i>	Brushbox	100L	20m	AS SHOWN
<i>Syzygium smithii</i>	Lillypilly	400mm	3m	AS SHOWN
<i>Viburnum odoratissium</i>	Laurus tinus	400mm	3-4m	AS SHOWN
SHRUBS & GROUND COVERS				
<i>Alocasia brisbanensis</i>	Native lily	400mm	As Shown	4
<i>Alpinea caerulea</i>	Native Ginger	400mm	As Shown	4
<i>Alpinea zerumbet</i>	Ginger	400mm	As Shown	4
<i>Aspidistra Elatior</i>	Cast Iron Plant	300mm	900mm	9
<i>Asplenium australasicum</i>	Birds nest	400mm	4 per m2	4
<i>Banksia ercifolia</i> "birthday candles"	Banksia (Dwarf form)	300mm	300mm	4
<i>Blechnum "Silver Lady"</i>	Hard Fern	400mm	As Shown	4
<i>Casuarina glauca</i> Cousin It	Dwarf sheoak	300mm	250mm	6
<i>Correa alba</i>	White Correa	200mm	900mm	5
<i>Cordylina stricta</i>	Cordylina	400mm	1200mm	3
<i>Crinum pedunculatum</i>	Swampy Lily	400mm	1000mm	3
<i>Cyathea australis</i>	Rough tree fern	400mm	2500mm	AS SHOWN
<i>Cycas revoluta</i>	Sago Palm	400mm	500mm	2
<i>Dichondra repens</i>	Kidney Weed	300mm	300mm	4
<i>Dichondra Silver Falls</i>	Silver Falls	150mm	Spreader	9
<i>Doryanthes excelsa</i>	Gymea lily	400mm	1200mm	1
<i>Eniostemon myoporoides</i>	Wax flower	300mm	1500mm	2
<i>Grevillea poorinda</i> 'Royal Mantle'	Grevillea Royal Mantle	200mm	150mm	6
<i>Hardenbergia volacea</i>	Purple Twining Pea	200mm	Creeper	5
<i>Leptospermum flavescens</i> "Cardwell"	Tea tree	200mm	1.2M	2
<i>Philodendron</i> 'Rojo Congo'	Rojo Congo	300mm	1200mm	4
<i>Philodendron</i> 'Xanadu'	Xanadu	300mm	1200mm	4
<i>Plectranthus argentatus</i>	Silver plectranthus	200mm	600mm	6
<i>Viola hederacea</i>	Native violet	150mm	Spreader	12
<i>Westringia fruticosa</i>	Coast Rosemary	300mm	1200mm	6
GRASSES				
<i>Dianella caerulea</i> "breeze"	Blue Flax-lily	150mm	450mm	9
<i>Lomandra katrinus</i>	Lomandra	150mm	650mm	9
<i>Lomandra hystrix</i>	Lomandra	150mm	1000mm	9
<i>Lomandra</i> 'Savanna Blue'	Lomandra	150mm	400mm	9
TRELLIS PLANTS				
<i>Treachelospermum jasminoides</i>	Star Jasmine	400mm	Creeper	600CTS
<i>Hibbertia scandens</i>	Guinea flower	400mm	Creeper	600CTS
<i>Pandorea jasminoides</i>	Bower Vine	400mm	Creeper	600CTS

Plant schedule is indicative only and is subject to change subject nursery availability

03	21/10/21	DA	IS	NM
2	7/9/21	DA	MZ	NM
1	10/12/20	DA	MMG	NM
02	27/11/20	Draft	MMG	NM
01	20/11/20	Preliminary	MMG	NM
rev	date	name	by	chk

fjmt studio architecture interiors landscape urban community
sydney melbourne uk
Level 5, 70 King Street t +61 2 9251 7077 w fjmtstudio.com



project
LIVERPOOL CIVIC PLACE PROJECT
52 SCOTT ST, LIVERPOOL
SYDNEY NSW <SITE POSTCODE>

title
DEVELOPMENT APPLICATION
Palettes

scale	As Shown @ A1	first issued	20/11/20
project code	sheet no.	revision	
BLCP	DA-LA-8031	03	

Issued for Approval